

**BILL OF QUANTITY OF ELECTRICAL WORKS N/W: PROVIDING ELECTRICAL WORKS FOR  
UCO BANK BANK, AT PATLIPUTRA BRANCH**

BRANCH					
A.	SUB HEAD-I (WIRING)				
B.	SUB HEAD-II (DISTRIBUTION BOARDS & PANELS)				
C.	SUB HEAD-III (SUPPLY OF FIXTURES & FANS)				
D.	SUB HEAD - IV (SUPPLY OF CABLE MAIN & SUBMAIN)				
E.	SUB HEAD - V (SUPPLY & MAKING OF EARTHPIES)				
F.	SUB HEAD - VI (ATM WORK )				
	<b>TOTAL:-</b>				
	<b>G.S.T(Extra as applicable)</b>				
SL. NO.	ITEM OF WORK	UNIT	QTY	RATE	AMOUNT
<b>SUB HEAD - I (WIRING)</b>					
1	Wiring for light point/ fan point/ exhaust fan point/ call bell point with 1.5 sq mm FR PVC insulated copper condtr single core cable in surface/ recessed PVC conduit with modular switch, modular plate, suitable GI box and earthing the 3rd point with 1.5 sqmm FR PVC insulated copper conductor single core cable etc as reqd.	Each	45		
2	Wiring for A.C. Point with 2 x 4 sqmm FR PVC insulated copper conductor single core cable in surface/ recessed PVC conduit / PVC Casing - n Capping along with one no 4 sq mm FR PVC insulated copper conductor single core cable for loop earthing as required.	Mtr.	125		
3	Sub main Wiring for Light/Fan Power D.B. with 4 x 4 sqmm FR PVC insulated copper conductor single core cable in surface/ recessed PVC conduit / PVC Casing - n Capping along with 1X4 sq mm FR PVC insulated copper conductor single core cable for loop earthing as required.	Mtr.	20		
4	Sub Main Wiring from LT Panel to TPN D.B. for RAW power of computer with 4 x 4 sqmm FR PVC insulated copper conductor single core cable in surface/ recessed PVC conduit / PVC Casing - n Capping along with 1X4 sq mm FR PVC insulated copper conductor single core cable for loop earthing as required.	Mtr.	20		
6	Sub main Wiring between LT Panel to UPS Panel to UPS feed D.B. with 2 x 6 sqmm FR PVC insulated copper conductor single core cable in surface/ recessed PVC conduit / PVC Casing - n Capping along with one no 6 sq mm FR PVC insulated copper conductor single core cable for loop earthing as required.	Mtr.	20		
7	Wiring for light/ fan circuit wiring with 2 x 2.5 sqmm FR PVC insulated copper conductor single core cable in surface/ recessed PVC conduit / PVC Casing - n Capping along with one no 2.5 sq mm FR PVC insulated copper conductor single core cable for loop earthing as required.	Mtr.	96		
8	Wiring for Power plug wiring with 2 x 2.5 sqmm FR PVC insulated copper conductor single core cable in surface/ recessed PVC conduit / PVC Casing - n Capping along with one no 2.5 sq mm FR PVC insulated copper conductor single core cable for loop earthing as required.	Mtr.	35		
9	wiring computer point with 2 x 2.5 sqmm FR PVC insulated copper conductor single core cable surface/ recessed PVC conduit / PVC Casing - n Capping along with one no 2.5 sq mm FR PVC insulated copper conductor single core cable for loop earthing as required.	Mtr.	405		
10	Supply & fixing suitable size GI box with modular plate and cover in front on surface/ in recess including providing & fixing 5 pin 5/6 amp modular socket outlet and 5/6 amps modular switch, connection, painting etc as required.	Set	6		
11	Supply & fixing AC controller unit consisting of one no 25 amp AC controller having overload protection starter, one no 20/25 amp SPN MCB and socket outlet, all fixed on a modular plate complete with metal box and recessed in wall as required.	Set	5		



12	Supply & fixing suitable size GI box with modular plate and cover in front on surface/ in recess including providing & fixing 6 pin 15/16 amp modular socket outlet and 15/16 amps modular switch, connection, painting etc as required.	Set	3		
11	Supply & fixing remote controlled call bell buzzer suitable for 230 V AC/ Battery operated with remote type bell push as reqd.	nos.	1		
12	Supply & fixing of computer point with 3 no. 5 pin 5/6 amp modular socket with modular type switch for UPS Power and 2 no. 5 pin 5/6 amp modular socket with modular type switch phenolic laminated sheet suitable size PVC/G.I. box. As per instruction of Bank/Ele.Er./as required.	nos.	11		
13	Supply & fixing of approved make including square face plate and M.S. housing box with RJ-11 socket etc complete in all respect conduits as required.(Each Section Head work station have 2 no. of RJ 11 Socket)				
a	RJ-11 socket	Set.	10		
b	Supplying and drawing 2 pair 0.5 sqmm FR PVC insulated annealed copper conductor, unarmored telephone cable in the existing surface/PVC conduit as required.	Mtr.	295		
14	Supplying and drawing fixing 8 SWG copper conductor wire for loop earthing as required.	Mtr.	50		
15	Supply & fixing Commissioning of 9U rack for 24 line Net all complete as required.	Set.	1		
16	Supplying and fixing of 24 port switch for networking.	Set.	1		
17	Supply & fixing of approved make including square face plate and M.S. housing box with RJ-45 socket etc complete in all respect including cat-6 Data cable conduits, identification of the hub				
a	IO box with RJ-45 socket.	Set.	10		
b	Cat-6 Data cable with PVC conduit	Mtr.	425		
c	Supply & fixing Commissioning of 2 Meter Patch Cord as required, all complete as	Set.	10		
<b>TOTAL SUB HEAD-I</b>					
<b>SUB HEAD - II (DISTRIBUTION BOARDS &amp; PANELS)</b>					
1	Supplying & Fixing following ways three pole and neutral sheet steel MCB DB, 415 volts on surface/ recessed complete with tinned copper busbar, neutral busbar, earth bar din bar detachable gland plate interconnections, phosphatised and powder painted i/c earthing etc as reqd. ( But without MCB / RCCB/Isolator)				
a	4 Way double door VTPN DB.	Each	1		
b	16 Way double door SPN DB.	Each	3		
2	Supply & fixing 5 amps to 32 amps rating 240 V 'C' series MCB suitable for inductive load of following poles in the existing MCB DB complete with connections, testing and commissioning etc as reqd.				
a	10/16 A 10 KA SP MCB "B"	Each	32		
b	63 A 10 KA FP MCB "C"	Each	1		
c	40A 10 KA DP MCB	Each	3		

3	<p>Supply &amp; fixing of indoor cubicle extensible type fully compartmentalized Distribution panel suitable for operation on 415 volts 50 Hz 3 phase 4 wire AC distribution system, suitable for 35 KA short circuit rating, confirming to IP:42 degree of protection, made up of 1.6 mm thick CRCA sheet, wall/ floor mounted, dust &amp; vermin proof enclosure, having hinged and earthed cover on front, having neoprene gasket/ katings stuck to the doors, duly painted with 65- 75 microns thick dry epoxy powder paint after 7 tank process of degreasing, derusting etc comprising of the following switchgears complete with all interconnections with suitable size of copper strip/hard drawn PVC insulated copper cable i/c keeping the panel in position, minor civil works as necessary, painting, sign writing etc complete as required (as per specifications of Panel attached)</p> <p><b>TEST REPORT:</b>  <b>FOLLOWING REPORTS HAVE TO BE PROVIDED BY THE VENDOR AT THE TIME OF SUBMISSION OF BILL:.</b>            1) FINAL AS BUILT PLAN IN THREE COPIES DRAWN TO THE SCALE, PRINTED IN CASE OF CAD AND BLUE PRINT, IN CASE OF MANUAL DRAWING.            2) QUALITY REPORT INDICATING THE ITEMS USED WITH THEIR MAKES.            3) PANEL MANUFACTURER'S CPRI TEST REPORT.            4) ROUTINE TEST REPORT OF PANEL FOR IR &amp; HV TEST.            5) GUARANTEE/WARRANTY CARD OF PANEL MANUFACTURER.(Panel Size-H-1400mm, W-900mm &amp; D-300mm)</p>	Set	1		
	<b>INCOMING:</b>				
	a) 100 amp 4 pole MCCB not less than 25 KA having Thermo magnetic type release for a range of 80% to 100% for Overload and short circuit complete with rotary handle etc as reqd.: 1 no				
	b)63 amp 4 pole heavy duty I-II-I type cubicle changeover switch: 1 no				
	<b>METERING:</b>				
	a) Multifunctional meter displaying A/V/PF & Hz along with 3 nos Suitable size CTs & HRC type protection fuse etc as reqd: 1 nos				
	c) LED type phase indicating lamp in phase distinguishing colors with HRC fuse : 6nos				
	<b>BUS BAR:</b>				
	Main Bus Bar: 4 strip 200 amp bus bar made of electrical grade aluminium strip enclosed in separate bus bar chamber, provided with DMC/ SMC bus bar support duly insulated with heat shrinkable sleeves in distinct colours as reqd: 1 set				
	Emergency Load Bus Bar: 4 strip 150 amp bus bar made of electrical aluminium copper strip enclosed in separate bus bar chamber, provided with DMC/ SMC bus bar support duly insulated with heat shrinkable sleeves in distinct colours as reqd: 1 set				
	<b>OUTGOINGS:</b>				
	40 amp, 10 KA D Series FP MCB : 1 nos.				
	40 amp, 10 KA D Series DP MCB: 2 nos.				
	25 amp 10 KA C series SPN MCB: 7 nos.				
	63 A rotary type Phase selector: 2 no				
	63 amp DP Manual Change Over For UPS Charging-1 nos.				
4	S/I/T/Commissioning of UPS PRIMARY & SECONDARY consist of:-25 Amps and 32Amps DP MCB with 2 Nos 32Amp power socke in MS Enclosure Box as required, all complete as per instructions of Bank / Architect.	nos.	2		
	<b>TOTAL SUB HEAD-II</b>				
<b>SUB HEAD - III (SUPPLY OF FIXTURES &amp; FANS)</b>					
1	Supplying of 6W/9W LED batten suitable for indoor application.	Each	2		
2	Supplying of stepped type electronic fan regulator on the existing modular plate switch box i/c connection but excluding modular plate etc as reqd.	Each	1		



3	Supplying, installation, testing & fixing of 36W LED CRCA white powder coated housing with ABS plastic bottom frame with electronic driver duly wired up to the terminal block, luminaire suitable for armstrong ceiling and grid ceiling complete with separate electronic driver. As approved make by Electrical consultant/architect etc as reqd.	Each	13		
4	Supplying of recess mounted circular LED (dia-6") downlighter 9/12 Watt LED suitable for armstrong ceiling and grid ceiling complete with separate electronic drive/approved make by architect/Ele. Consultant etc as required.	Each	24		
5	Supplying, installation, testing & fixing of 1X36 W tube light fitting powder coated batten with PC tube.	Each	6		
6	Supplying of Exhaust fan 300mm sweep HEAVY DUTY EXHAUST make-CROMPTON / approved equivalent.	Each	2		
7	Supplying of 1200 mm sweep energy efficient ceiling fan, connection with 1.5 sqmm PVC ins copper condtr, testing, commissioning etc as reqd.	Each	1		
8	Supplying of oscillating and tilting type wall bracket fan of 450 mm sweep i/c fixing the same on wall with Metal finishing, connection with 1.5 sqmm PVC insulated copper conductor, testing, commissioning etc as required. (Make Usha, Bajaj, Havells)	Each	10		
<b>TOTAL SUB HEAD-III</b>					
<b>SUB HEAD - IV (SUPPLY OF CABLE MAIN &amp; SUBMAIN)</b>					
1	Supply & laying for sub main from L.T line & DG line following sizes and core PVC/XLPE insulated PVC sheathed, heavy duty, armored electrical cable with aluminum conductor for working voltage up to and including 1100 volts. (Conforms to IS:1554, part-1) with 8 no. SWG die bare copper conductor wire for loop earthing, proper laying on wall or roof, thumbnail clipping and use proper size cable gland for cable sport etc. as required. all complete as per instructions of Elec. Er. / Architect.				
a	35 sq. mm, 3.5 core LT Cable	Mtr.	35		
<b>TOTAL SUB HEAD-IV</b>					
<b>SUB HEAD - V (SUPPLY &amp; MAKING OF EARTHPIITS)</b>					
1	Earthing with GI earth plate 600mm x 600mm x 6 mm thick accessories and pdg masonry enclosure with cover plate having locking arrangement and watering pipe etc ( but without charcoal or coke and salt) complete as required.	Set	3		
2	Extra for using charcoal and sal for GI / copper earth plate electrode as required ( 96 Kg charcoal & 5 Kg salt)	Set	4		
3	Providing & laying earth connection from earth electrode with 6 SWG dia GI wire in 15 mm dia. GI pipe from earth electrode as required.	Mtr.	20		
4	S/L 6 SWG G.I. wire on surface or in recess as reqd.	Mtr.	45		
5	High voltage insulation mat are relatively thin mats of thickness (2mm to 3.5mm) made of elastomeric polymers materials having a high insulation resistance, thus imparting total safety of human being from any leakage current. (Size-4'X5')	Sqft	20		
<b>TOTAL SUB HEAD-V</b>					
<b>SUB HEAD - VI (ATM WORK)</b>					
1	Wiring for light point/ fan point/ exhaust fan point/ call bell point with 1.5 sq mm FR PVC insulated copper condtr single core cable in surface/ recessed PVC conduit with modular switch, modular plate, suitable GI box and earthing the 3rd point with 1.5 sqmm FR PVC insulated copper conductor single core cable etc as reqd.	Each	7		
2	Wiring for A.C. Point with 2 x 4 sqmm FR PVC insulated copper conductor single core cable in surface/ recessed PVC conduit / PVC Casing - n Capping along with one no 4 sq mm FR PVC insulated copper conductor single core cable for loop earthing as required.	Mtr.	10		
3	Sub Main Wiring from LT Panel to ATM D.B. with 4 x 10 sqmm FR PVC insulated copper conductor single core cable in surface/ recessed PVC conduit / PVC Casing - n Capping along with 2X6 sq mm FRLS PVC insulated copper conductor single core cable for loop earthing as required.	Mtr.	18		

4	Wiring for UPS fed computer point with 2 x 2.5 sqmm FR PVC insulated copper conductor single core cable in surface/ recessed PVC conduit / PVC Casing - n Capping along with one no 2.5 sq mm FR PVC insulated copper conductor single core cable for loop earthing as required. ( 3 outlets, i.e 3 points each with 1 switch and 3 sockets shall be under one circuit	Mtr.	35		
5	Circuit wiring with 2 x 1.5 sqmm FR PVC insulated copper conductor single core cable surface/ recessed PVC conduit / PVC Casing - n Capping along with one no 1.5 sq mm FR PVC insulated copper conductor single core cable for loop earthing as required.	Mtr.	20		
6	Supplying & Fixing(4 Way double door VTPN DB.) following ways three pole and neutral sheet steel MCB DB, 415 volts on surface/ recessed complete with tinned copper busbar, neutral busbar, earth bar din bar detachable gland plate interconnections, phosphatised and powder painted i/c earthing etc as reqd. ( But with MCB / RCCB/Isolator)	Set	1		
7	S/F AC controller unit consisting of one no 25 amp AC controller having overload protection starter, one no 20/25 amp SPN MCB and socket outlet, all fixed on a modular plate complete with metal box and recessed in wall as reqd.	Set	1		
8	S/F wiring 3no. 6 pin 15/16 amp modular socket with modular type switch, phenolic laminated sheet suitable size PVC/G.I. box from UPS power .	Set	2		
9	S/F of approved make including square face plate and M.S. housing box with RJ-45 socket etc complete in all respect including cat-6 Data cable conduits, identification of the hub	Set.	2		
	a) RJ-45 socket	Mtr.	30		
	b) Cat-6 Data cable with PVC conduit				
10	Supplying, installation, testing & fixing of 36W LED CRCA white powder coated housing with ABS plastic bottom frame with electronic driver duly wired up to the terminal block, luminaire suitable for armstrong ceiling and grid ceiling complete with separate electronic driver.As approved make by Electrical consultant/architect etc as reqd.	Each	1		
11	Supplying of recess mounted circular LED (dia-6") downlighter 9/12 Watt LED suitable for armstrong ceiling and grid ceiling complete with separate electronic drive/approved make by architect/Ele.Consultant etc as required.	Each	6		
12	Supplying, installation, testing & fixing of 1X36 W (TMS021 1XTL-D36-28W , MAKE-PHILIPS) tube light fitting powder coated batten with PC tube (1XTL-36W, MAKE-PHILIPS)	Each	1		
13	Earthing with GI earth plate 600mm x 600mm x 6 mm thick accessories and pdg masonry enclosure with cover plate having locking arrangement and watering pipe etc ( but without charcoal or coke and salt) complete as required.	Set	1		
14	Extra for using charcoal and sal for GI / copper earth plate electrode as required ( 96 Kg charcoal & 5 Kg salt)	Set	1		
15	Providing & laying earth connection from earth electrode with 6 SWG dia GI wire in 15 mm dia. GI pipe from earth electrode as required.	Mtr.	15		
TOTAL SUB HEAD-VI					

**ARCHITECT- ARTCON DESIGN CONSULTANTS, PATNA**

**CLINTE- UCO BANK**

**PROJECT- UCO BANK, PATLIPUTRA**

THE FOLLOWING FIRST MAKE OF MATERIALS AND EQUIPMENTS SHEEL BE USED IN THE WORK. IN THE EVENT OF NON AVAILABILITY OF FIRST MAKE OR ITEMS, THE APPROVAL OF THE ARCHITECT/ELECTRICAL ENGINEER/EMPLOYER MUST BE OBTAINED IN THE WRITING PRIOR TO USING SECOND/SUBSTITUTE MAKE.

LIST OF APPROVED MAKES OF ELECTRICAL ACCESSORIES & SWITCHGEARS:

SL NO	ITEM	MAKE
1	PVC CONDUIT & ACCESSORIES	AKG/ CAPS/MALHOTRA – ISI MARKED
2	COPPER WIRE PVC INSULATED FR	HAVELL'S /FINOLEX/RR KABLE
3	MODULAR SWITCH & BOARDS	ROMA/CRABTREE/L&T/ LEGRAND
4	MCB& MCB DB	LEGRAND/SIEMENS/SCHNEIDER
5	LED LIGHT FITTINGS	PHILIPS/ HAVELL'S/ MAGIK LED (CENTURY)
6	CEILING/WALL/EXHAUST FAN	KHAITAN/HAVELL'S/CROMPTON
7	MCCB	L&T/SCHNEIDER/ABB.
8	CHANGEOVER	L&T/ ABB/HAVELL'S
9	MULTIFUNCTIONAL METERS	SCHNEIDER/HPL/L&T
10	CURRENT TRANSFORMER	AE/KAPPA/ESSMA
11	HRC FUSE	L&T/HAVELL'S /GE
12	TELEPHONE WIRE	HAVELL'S /FINOLEX/RR CALEL
13	CALL BELL	ROMA/CRABTREE/L&T/ LEGRAND
14	LT PANEL/ UPS PANEL	CPRI TESTED MANUFACTURER
15	AC CONTROLLER	NORTH WEST/ LEGRAND/ABB
16	LUGS	DOWELL'S/JAINSON/CONNECTWELL
17	NET-WORKING HUB	D-Link/ LEGRAND/SACNEIDER
18	AIR CONDITIONING	LG/DAIKIN/CARRIER



#### **SPEIFICATION OF WIRING:**

- 1) PVC CONDUIT SHALL BE IS MARKED AND THICKNESS OF CONDUIT EMBEDDED IN SLAB/ WALL SHALL BE 2.0 MM THICK AND 1.6 MM THICK FOR SURFACE CONDUIT. ALL CONDUITS ABOVE 25 MM SHALL BE 2.0 MM THICK ONLY.
- 2) SPACER MADE OF GI STRIP NOT LESS THAN .60 MM THICK WITH BASE SHALL BE USED AT A DISTANCE NOT MORE THAN 750 MM FROM EACH OTHER FOR SURFACE WIRING. SPACER SHALL BE FIXED WITH PVC RAWL PLUG AND NOT DITOFIX POWDER. PVC BASE SADDLES ARE NOT ALLOWED.
- 3) WIRE USED SHALL BE OF FR STANDARD.
- 4) COLOUR CODE SHALL BE USED IN THE ENTIRE WIRING TO IDENTIFY THE PHASES ON WHICH EVERY SINGLE PHASE LOAD IS, VERY DISTINCTLY. EARTHING SHALL BE IN GREEN COLOUR AND NEUTRAL SHALL BE IN BLACK COLOUR.
- 5) EVERY TERMINATION SHALL BE MADE WITH CRIMPING COPPER LUGS & ANTI CORROSIVE PASTE MUST BE APPLIED BEFORE CRIMPPING.
- 6) ALL THE RECESSED SWITCHBOARDS SHALL BE METALIC, GALVANISED AND OF THE SAME MAKE AS THAT OF SWITCHES USED.
- 7) NEUTRAL & EARTHING WIRE FOR EACH CIRCUIT/POWER CIRCUIT/UPS POINT SHALL BE DRAWN SEPERATELY AND IN CASE NEUTRAL OR EARTHING WIRES ARE FOUND TO BE LOOPED IN ANY CIRCUIT, THE MEASUREMENT OF THE CIRCUIT SHALL NOT BE CONSIDERED.
- 8) EXPOSED WIRING SHALL BE DONE IN HEAVY DUTY PVC CASING N CAPING.
- 9) ALL METALIC BOARDS SHALL BE PROPERLY EARTHED.
- 10) 3<sup>RD</sup> PIN OF ALL SOCKETS MUST BE EARTHED.

#### **PANEL:**

- 1) FRAME & SHUTTERS SHALL BE 1.6 MM THICK CRCA SHEET.
- 2) ENCLOSURE SHALL BE RIGOROUSLY TREATED FOR DEGREASING, DERUSTING & PASSIVATION BY 7 TANK PROCESS OF CHEMICAL TREATMENT AND PANEL SHALL BE PAINTED IN PAINT SHOP HAVING COMPLETE 7 TANK FACILITIES.
- 3) PAINT SHALL BE DRY EPOXY POWDER PAINT OF RAL 732 SIEMENS GRAY SHADE.
- 4) DISTANCE BETWEEN PHASE TO PHASE SHALL BE NOT LESS THAN 32 MM AND PHASE TO EARTH SHALL BE NOT LESS THAN 25 MM.
- 5) CONTROL/METERING WIRING SHALL BE DONE WITH 1.5 SQMM PVC INSULATED WIRE.
- 6) WIRING BETWEEN BUS BAR & SWITCHES SHALL BE WITH FOLLOWING SIZES OF WIRES:
  - A) UPTO 40 AMP: 6 SQMM
  - B) UPTO 63 AMP: 10 SQMM
  - C) UPTO 125 AMP: 25 SQMM
  - D) UPTO 160 AMP: 35 SQMM
  - E) ABOVE 160 AMP: STRIP ONLY
- 7) BUS BAR SELECTION SHALL BE MADE ON THE BASIS OF 1 SQMM= 1.6 AMP FOR COPPER STRIPS.
- 8) OUTGOING ACCESS TO SWITCHES SHALL NOT BE THROUGH COMPARTMENT OF OTHER SWITCHES.
- 9) SWITCHGEAR MAKES SHALL BE AS PER SCHEDULE OF MAKES.
- 10) TWO NOS EARTHING TERMONALS SHALL BE PROVIDED IN BODY OF PANEL.

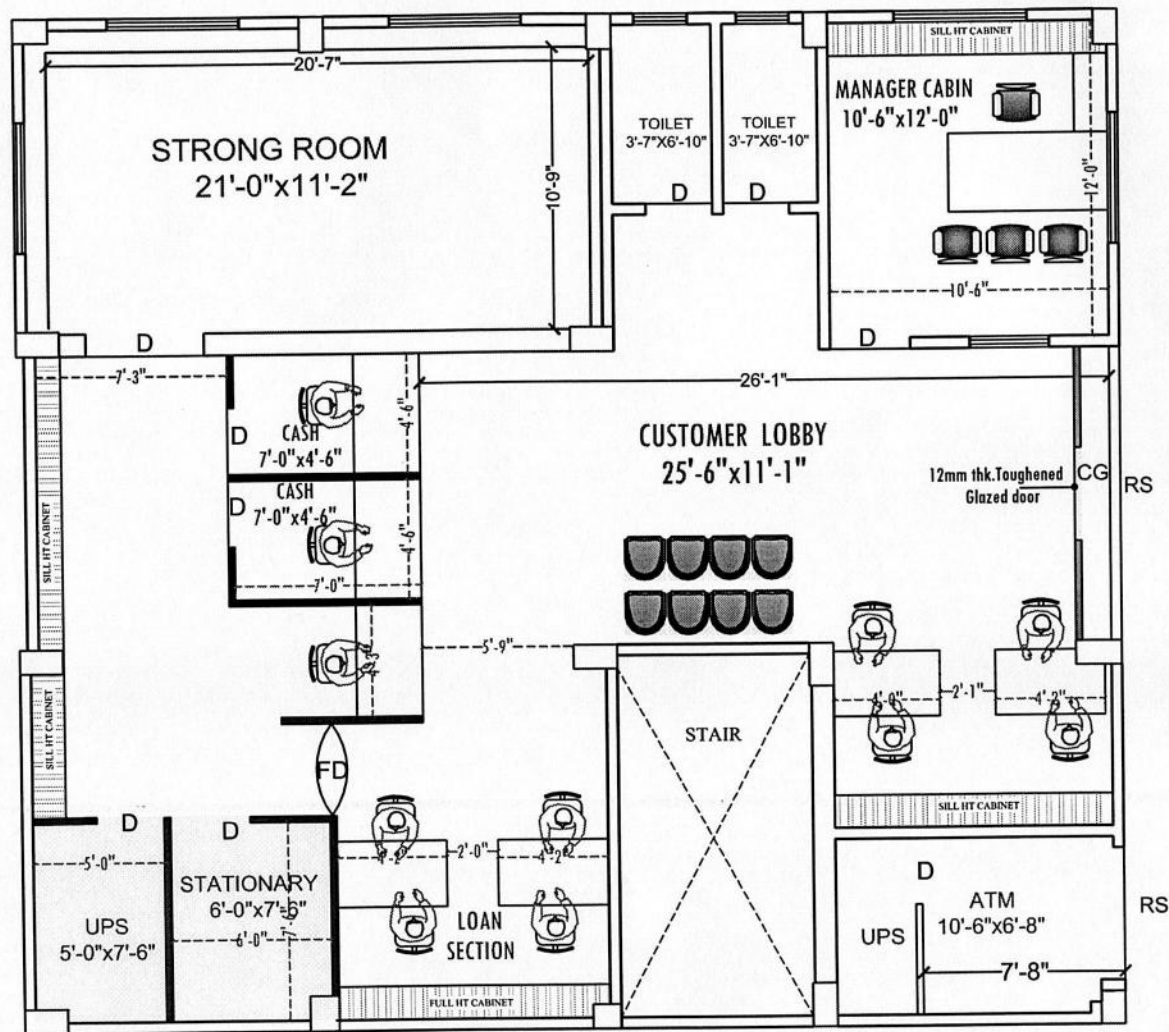
- 11) ALL HINGED COVERS SHALL BE EARTHED.
- 12) VENDOR SHALL SUBMIT PANEL GA IN DUPLICATE BEFORE MANUFACTURING AND GET IT APPROVED BY BANK/ ELECTRICAL CONSULTANT.

**TEST REPORT:**

FOLLOWING REPORTS HAVE TO BE PROVIDED BY THE VENDOR AT THE TIME OF SUBMISSION OF BILL:

- 1) WIRING IR TEST REPORT, EARTHING TEST REPORT & POLARITY TEST REPORT ON VENDOR'S LETTER PAD/ GREEN CARD DULY SIGNED BY CONTRACTOR & LICENSED SUPERVISOR.
- 2) FINAL AS BUILT PLAN IN THREE COPIES DRAWN TO THE SCALE, PRINTED IN CASE OF CAD AND BLUE PRINT, IN CASE OF MANUAL DRAWING.
- 3) QUALITY REPORT INDICATING THE ITEMS USED WITH THEIR MAKES.
- 4) PANEL MANUFACTURER'S CPRI TEST REPORT.
- 5) ROUTINE TEST REPORT OF PANEL FOR IR & HV TEST.
- 6) GUARANTEE CARD OF PANEL MANUFACTURER.




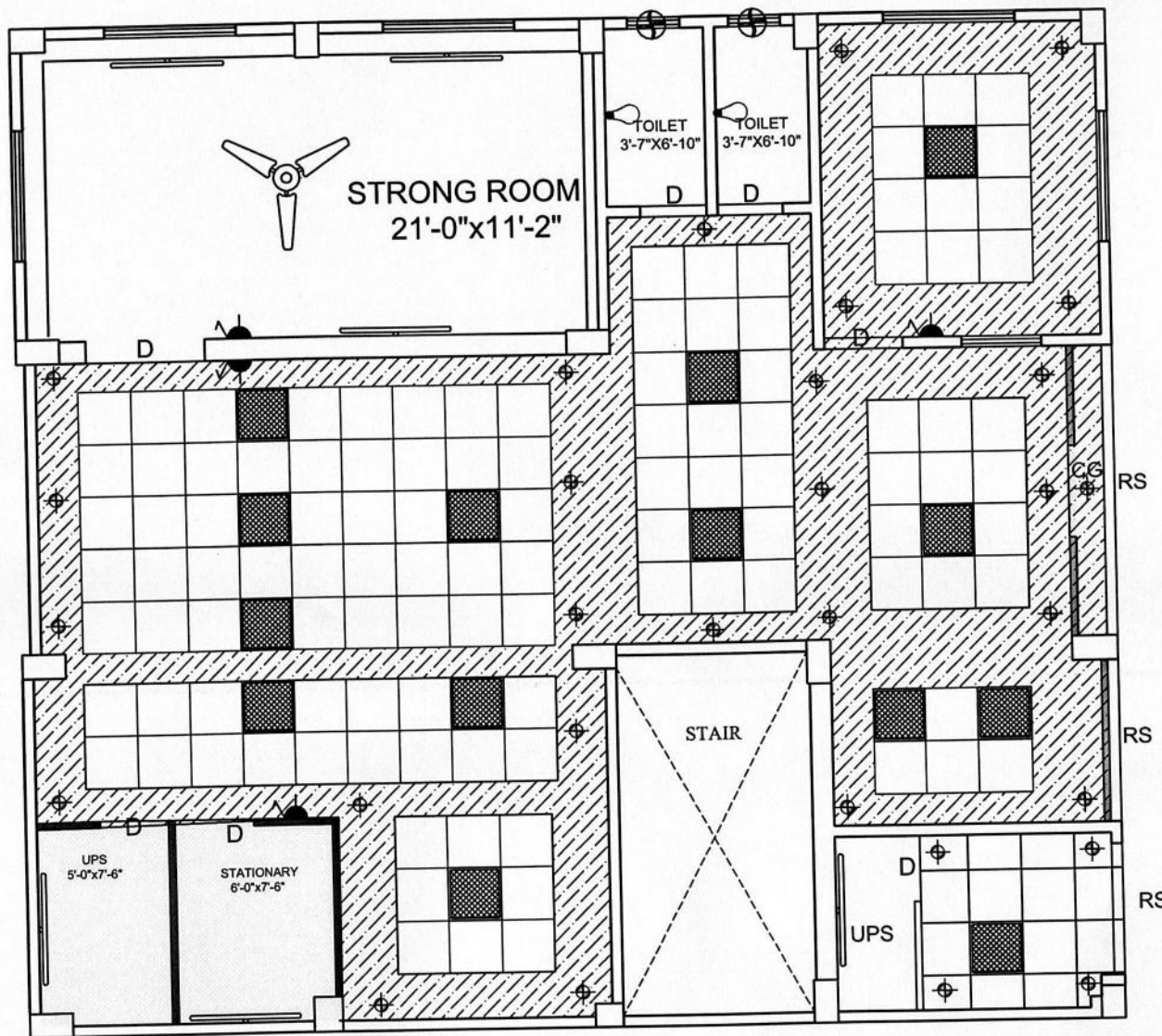


OPTION:-03

M A I N R O A D

**TOTAL CARPET AREA = 1227.70 (Approximate)**

NOTE	PROJECT:-	REVISION:-		Sheet title :- <b>FURNITURE LAYOUT PLAN</b>			
<div></div> HALF HT PARTITION	PROPOSED INTERIOR LAYOUT OF UCO BANK  AT-PATLIPUTRA BRANCH	Date :-	Issues	Scale :-	Date :-	Drawn by :-	Checked by :-
<div></div> 7' HT PARTITION				N.T.S	31/12/2021	Aditya kumar	Ar. Amit Kumar
<div></div> SEMI GLAZED FULL HT PARTITION				ARCHITECT :-			
<div></div> FULL HT. PARTITION				<div></div> <div>ARTCON DESIGN CONSULTANTS ARCHITECTS ENGINEERS INTERIOR DESIGNERS COMPUTER AIDED DESIGN G-04 Laxmi Palace, Mitra Compound, Boring Road , Patna - 800001 +91 9931723771, amitkumar73@gmail.com +91 9386717726 artcondesignconsultants.com</div>			



- Note :-
- \* This drawing is property of **FVC** it must not be retained, copied reproduced in any form without written permission of **FVC**.
  - \* Use architectural drawing for detail dimensions.
  - \* In case of any discrepancy in this drawing or difficulty at site this office should be referred.
  - \* Position of power and light points should be compared with the position of geyser and basin from p.h.e. drawing.
  - \* Diameter of sub main conduit is 1" and remaining are of 0.75".

#### LEGEND

SYMBOL	DESCRIPTION	HEIGHT
	CEILING FAN	
	1X4-40W FLUORESCENT FIXTURE	7'-0"
	WALL BRACKET/CFL	7'-0"
	CEILING LIGHT	CEILING
	CHANDELIER	CEILING
	SWITCH BOARD WITH 5 AMP SOCKET	4'-6"
	SWITCH BOARD	4'-6"
	5 PIN 5A PLUG WITH SWITCH	1'8"/5'8"
	5 PIN 15A POWER PLUG	
	FM FOR FREEZE & WM FOR WASHING	1'8"/4'8"
	25A A.C. POWER PLUG	1'6"
	CALL BELL PUSH SWITCH	4'6"
	CALL BELL BUZZER	7'-0"
	EXHAUST FAN	7'-0"
	T.V. OUTLET	1'6"
	TELEPHONE OUTLET	1'6"
	FIRE DETECTION SYSTEM	
	DISTRIBUTION BOX	6' 0"
	T.V. JUNCTION BOX	
	JUNCTION BOX	

#### LT. MAIN CONTROL PANEL

	WAY FOR T.V. & TELEPHONE WIRING.
	WAY FOR POINT WIRING. (25mm dia pipe)
	WAY FOR POINT WIRING (19mm dia pipe)
	WAY FOR SLB MAIN WIRING.
	WAY FOR POWER POINT WIRING.
	WAY FOR CIRCUIT WIRING.

CLINT:-  
**UCO BANK**

PROJECT:-  
**PROPOSED INTERIOR LAYOUT OF  
UCO BANK  
AT-PATLIPUTRA BRANCH**

SHEET TITLE:-  
**ELECTRICAL LAYOUT PLAN**

DATE	MONTH	YEAR	DESIGNER	DATE
NTS		24-01-2022	ADARSH	Er.P.Gaurav

ARCHITECT:-  
**ARTCON DESIGN CONSULTANTS**  
A. P. C. M. I. T. I. S. R. G. I. P. R. S.  
G-04 Laxmi Palace, Mira Compound, Boring  
Road, Patliputra - 800 001  
Mob: 9897223771, 9897223772, 9897223773  
Email: artcondesign@gmail.com  
Artcondesign@gmail.com